

SCOFIELD Integral Color SG

■ Integral Concrete Color Chart A-362 ■



A SIKA BRAND

1 BAG PER 2 YARDS

1 BAG PER 1 YARD

2 BAGS PER 1 YARD

3 BAGS PER 1 YARD



078 Chaparral



Pueblo Brown



Calandria Brown



Gravel Brown



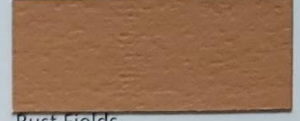
084 Hay Fields



Wheat Fields



Amber Fields



Rust Fields



117 Spring Rose



Summer Rose



Winter Rose



Red Rose



130 Latte



Chocolate



Cappuccino



Hot Cocoa



134 Southern Clay



Santa Fe Clay



Roman Clay



Ceramic Clay



160 Sunset Red



Sunrise Red



Red Brick



Iron Brick



237 Sand Buff



Coronado Buff



Egyptian Dunes



Summer Dunes



447 Prairie Beige



Schooner Beige



Moroccan Beige



Horizon Beige



641 Taos Tan



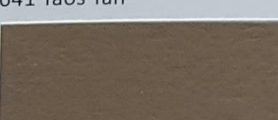
Aztec Tan



Southwest Tan



New Mexico Tan



677 Soft Chestnut



Ripe Chestnut



Roast Chestnut



Plum Chestnut



860 Metallic Gray



Cobble Gray



London Gray



Thunder Gray

Many things can affect the appearance of color. For best color matching results, a representative job site sample should be cast using materials and finishing techniques that will be used on the project.

Colors shown on this chart represent formulations using medium gray cement and sealed with solvent based SCOFIELD® CureSeal™ 700. Variations can be expected due to differences in cement, aggregates and method of application. NOTE: When using lower color loadings, such as one bag per two yards, the color of the cement and sand have a more pronounced influence on the final color resulting in a greater chance of color variation.

